

EVIO Labs Medford (pka Kenevir Research)
 540 East Vilas Road, Suite F, Central Point, OR 97502
 541-668-7444 / OLCC 010-1001626980D / www.EVIOLabs.com

Rise Caramel 121619
Seventh Hill Releaf LLC
 For Info Only



Confident Cannabis ID: 1912KR0131.6912

Sample ID: M192133-02

Matrix: Cannabinoid Product (solid)

METRC Batch #:

Sampling Method/SOP: SOP.T.20.010

Date Sampled: 12/17/19 09:00

Date Accepted: 12/17/19

Harvest/Process Lot ID:

Batch ID:

Batch Size (g):

Unit for Sale:

Harvest/Production Date:

Cannabinoid Analysis

FOR INFORMATIONAL USE ONLY - NOT FOR REGULATORY PURPOSES

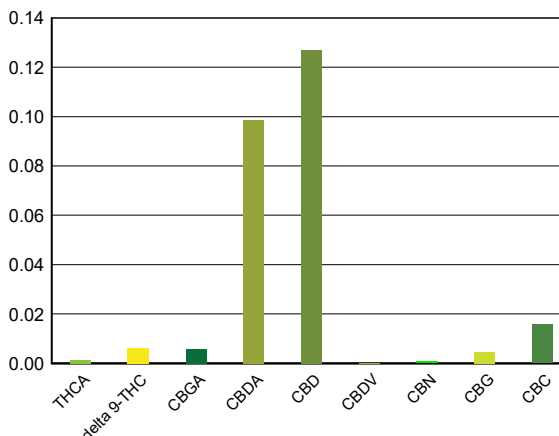
Date/Time Extracted: 12/18/19 10:14

Analysis Method/SOP: SOP.T.40.020

Date/Time Analyzed: 12/18/19 17:30

Cannabinoids	LOQ(%)	mg/g	% weight	Cannabinoid Profile
Total THC ((THCA*0.877)+Δ9THC)		0.06	0.006	
Total CBD ((CBDA*0.877)+CBD)		2.14	0.214	

THCA	0.0020	< LOQ	< LOQ
delta 9-THC	0.0020	0.06	0.0061
CBGA	0.0020	0.06	0.0057
CBDA	0.0020	0.99	0.0986
CBD	0.0020	1.27	0.1271
CBDV	0.0020	< LOQ	< LOQ
CBN	0.0020	< LOQ	< LOQ
CBG	0.0020	0.05	0.0045
CBC	0.0020	0.16	0.0158
CBDV-A	0.0020	< LOQ	< LOQ
Sum of tested Cannabinoids	0.0020	2.58	0.2579



"Total THC" and "Total CBD" are calculated values and are an Oregon reporting requirement (OAR 333-064-0100). For Cannabinoid analysis, only delta 9-THC, THCA, CBD, CBDA are ORELAP accredited analytes. Cannabinoid values reported for plant matter are dry weight corrected; Oregon Water Activity action level is 0.65Aw and Oregon Moisture Content action level is 15%. Samples above limit will be highlighted RED; FD = Field Duplicate; LOQ = Limit of Quantitation.

Stephanie Moon
 Laboratory Director - 12/19/2019

EVIO Labs Medford (pka Kenevir Research)
 540 East Vilas Road, Suite F, Central Point, OR 97502
 541-668-7444 / OLCC 010-1001626980D / www.EVIOLabs.com

Quality Control

Batch: M19L104 - SOP.T.30.050 Prep for Cannabinoids

Blank(M19L104-BLK1)			Extracted: 12/18/19 10:14		Analyzed: 12/18/19 17:03		
Analyte	Result	LOQ	Recovery Limits	Analyte	Result	LOQ	Recovery Limits
THCA	< LOQ	0.0020 (%)	< LOQ	delta 9-THC	< LOQ	0.0020 (%)	< LOQ
CBDA	< LOQ	0.0020 (%)	< LOQ	CBD	< LOQ	0.0020 (%)	< LOQ
CBDV-A	< LOQ	0.0020 (%)	< LOQ	CBDV	< LOQ	0.0020 (%)	< LOQ
CBG	< LOQ	0.0020 (%)	< LOQ	CBGA	< LOQ	0.0020 (%)	< LOQ
CBN	< LOQ	0.0020 (%)	< LOQ	CBC	< LOQ	0.0020 (%)	< LOQ
Sum of tested Cannabinoid:	< LOQ	0.0020 (%)	< LOQ				

LCS(M19L104-BS1)			Extracted: 12/18/19 10:14		Analyzed: 12/18/19 17:16		
Analyte	% Recovery	LOQ	Recovery Limits	Analyte	% Recovery	LOQ	Recovery Limits
THCA	113	(%)	70-130	delta 9-THC	118	(%)	70-130
CBDA	121	(%)	70-130	CBD	118	(%)	70-130



Stephanie Moon
 Laboratory Director - 12/19/2019