



Certificate of Analysis

CANNABUSINESS LABORATORIES, LLC

Customer:

Snowbelt Gardens LLC
PO Box 2135
Jamestown, NY 14702

Received Date **8/26/2024**

COA Released **9/10/2024**

Comments

Sample ID **240805026**

Order Number **CB240805012**

Sample Name **White CBG**

External Sample ID

Batch Number **6**

Product Type **Flower**

Sample Type **Flower**

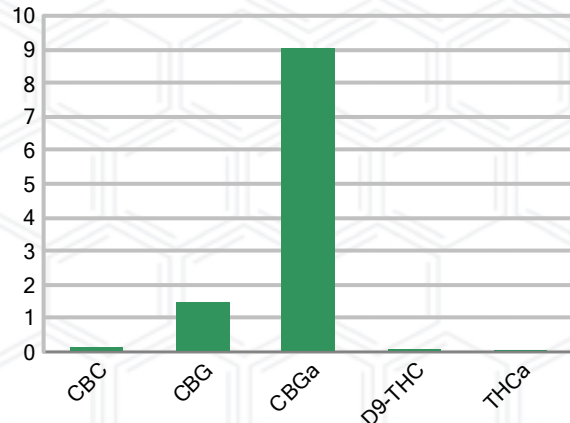
CANNABINOID PROFILE

Analyte	LOQ (%)	% Dry Weight	mg/g
CBC	0.01	0.142	1.419
CBD	0.01	ND	ND
CBDa	0.01	ND	ND
CBDV	0.01	ND	ND
CBG	0.01	1.458	14.58
CBGa	0.01	9.019	90.19
CBN	0.01	ND	ND
d8-THC	0.01	ND	ND
d9-THC	0.01	0.073	0.734
THCa	0.01	0.037	0.371
Total Cannabinoids		10.73	107.3
Total Potential THC		0.106	1.059
Total Potential CBD		N/A	N/A
Total Potential CBG		9.377	93.77
Ratio of Total Potential CBD to Total Potential THC			N/A
Ratio of Total Potential CBG to Total Potential THC			88.46 : 1

SAMPLE IMAGE



CANNABINOIDS % Dry Weight



*Total Cannabinoids refers to the sum of all cannabinoids detected.

*Total Potential CBD = (0.877 x CBDa) + CBD. *Total Potential THC = (0.877 x THCa) + THC. *Total Potential CBG = (0.877 x CBGa) + CBG.

*Total Potential THC/CBD are calculated to take into account the loss of an acid group during decarboxylation.



J. Hobgood
Laboratory Manager

SIGNATURE

Jamie Hobgood

LABORATORY MANAGER

09/10/2024 9:36 AM

DATE

This product has been tested by CannaBusiness Laboratories using validated testing methodologies and a quality system. Values reported relate only to the product tested. CannaBusiness Laboratories makes no claims as to the efficacy, safety, or other risks associated with any detected or non-detected levels of any compounds reported herein. This Certificate shall not be reproduced except in full, without the written permission of CannaBusiness Laboratories. Photo is of sample received by the lab and may vary from final packaging. The results apply to the sample as received.





Certificate of Analysis

CANNABUSINESS LABORATORIES, LLC

Customer

Snowbelt Gardens LLC
PO Box 2135
Jamestown, NY 14702



Sample Name: White CBG

Sample ID: 240805026
Order Number: CB240805012
Product Type: Flower
Sample Type: Flower
Received Date: 08/26/2024
Batch Number: 6

COA released: 09/10/2024 9:36 AM

Potency (mg/g) Dry Weight

Date Tested: 08/27/2024		Method: CB-SOP-028	
Instrument:			
0.106 %	0.000 %	10.73 %	107.3 mg/g
Total THC	Total CBD	Total Cannabinoids	Total Cannabinoids

Analyte	Result	Units	LOQ	Result	Units
CBC (Cannabichromene)	0.142	%	0.010	1.419	mg/g
CBD (Cannabidiol)	ND	%	0.010	ND	mg/g
CBDa (Cannabidiolic Acid)	ND	%	0.010	ND	mg/g
CBDV (Cannabidivarin)	ND	%	0.010	ND	mg/g
CBG (Cannabigerol)	1.458	%	0.010	14.58	mg/g
CBGa (Cannabigerolic Acid)	9.019	%	0.010	90.19	mg/g
CBN (Cannabinol)	ND	%	0.010	ND	mg/g
D8-THC (D8-Tetrahydrocannabinol)	ND	%	0.010	ND	mg/g
D9-THC (D9-Tetrahydrocannabinol)	0.073	%	0.010	0.734	mg/g
THCa (Tetrahydrocannabinolic Acid)	0.037	%	0.010	0.371	mg/g

Potency (mg/g) Dry Weight

Date Tested: 08/27/2024		Method: CB-SOP-028		Instrument:					
Analyte	Result	Units	LOQ	Result	Analyte	Result	Units	LOQ	Result
Percent Moisture	13	%	0.010						

Mycotoxins

Date Tested: 08/27/2024		Method: CB-SOP-025		Instrument:					
Analyte	Result	Units	LOQ	Result	Analyte	Result	Units	LOQ	Result
Ochratoxin A	ND	ppm	0.010		Aflatoxin B1	ND	ppm	0.010	
Aflatoxin G2	ND	ppm	0.010		Aflatoxin B2	ND	ppm	0.010	
Aflatoxin G1	ND	ppm	0.010						

Microbial (Flower Matrix)

Date Tested: 09/05/2024		Method:		Instrument:					
Analyte	Result	Units	LOQ	Result	Analyte	Result	Units	LOQ	Result
STEC (E. coli)	Negative				Salmonella	Negative			
L. monocytogenes	Negative				Yeast/Mold (qPCR)	0	CFUs		

NT = Not tested, ND = Not detected; LOQ = Limit of Quantitation; <LOQ = Detected; >ULOL = Above upper limit of linearity; CFU/g = Colony forming units per 1 gram; TNTC = Too numerous to count

This product has been tested by CannaBusiness Laboratories using validated testing methodologies and a quality system. Values reported relate only to the product tested. CannaBusiness Laboratories makes no claims as to the efficacy, safety, or other risks associated with any detected or non-detected levels of any compounds reported herein. This Certificate shall not be reproduced except in full, without the written permission of CannaBusiness Laboratories. Photo is of sample received by the lab and may vary from final packaging. The results apply to the sample as received.



Certificate of Analysis

CANNABUSINESS LABORATORIES, LLC



J. Hobgood
Laboratory Manager

Jamie Hobgood

09/10/2024 9:37 AM

SIGNATURE

DATE

NT = Not tested, ND = Not detected; LOQ = Limit of Quantitation; <LOQ = Detected; >ULOL = Above upper limit of linearity; CFU/g = Colony forming units per 1 gram; TNTC = Too numerous to count

This product has been tested by CannaBusiness Laboratories using validated testing methodologies and a quality system. Values reported relate only to the product tested. CannaBusiness Laboratories makes no claims as to the efficacy, safety, or other risks associated with any detected or non-detected levels of any compounds reported herein. This Certificate shall not be reproduced except in full, without the written permission of CannaBusiness Laboratories. Photo is of sample received by the lab and may vary from final packaging. The results apply to the sample as received.